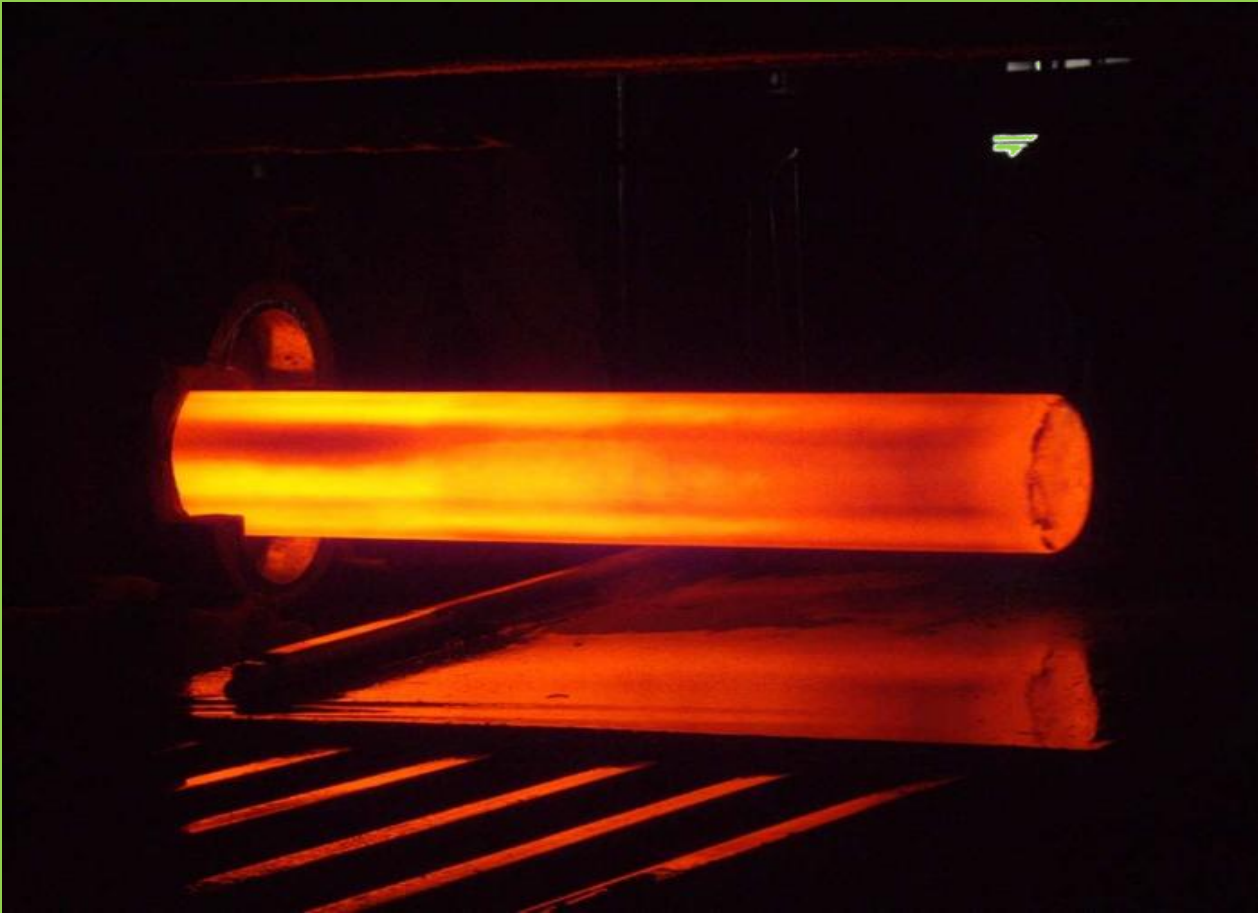


**WANGTREX HK L.T.D**



**WANGTREX HK L.T.D specialized in supplying gas cylinders.**



**We provide large scale and completed specification high pressure seamless gas cylinders, fire fighting cylinders, ALU cylinders for medical use and also cylinders for vehicle, which nominal service pressure ranges from 0.6MPa to 30MPa, nominal water capacity ranges from 0.7liter to 1000liter and nominal diameter ranges from 70mm to 406mm.**

**Our products have possessed the pressure vessel manufacturing license of level A1, B1, B2, B3, D1 as well as D2, and approval of DOT, TUV, CCS, BV, ABS, Lloyd's (both British Lloyd's and Germany Lloyd's) ,TC3AAM and can meet the standard of BS, JIS, DIN, EN, KSB. We have successfully entered the market in Europe countries , South America, Middle East and Africa.**





**DOT-3AA Standard Cylinders**

Type	Diameter (mm)	Height (mm)	Weight (without valve, cap)	Service pressure	Hydraulic testing pressure	Material	Min wall thickness (in)	Water capacity Cu in(L)
2400 (232)	232	1450	60	2400	4000	4130X	0.225	50
2400 (232)	232	1450	60	2400	4000	34Mn2V	0.225	50
2175 (232)	232	1345	49.5	2175	3625	37Mn	0.204	46.7
2400 (232)II	232	1355	54	2400	4000	37Mn	0.225	46.7
2900 (232)I	232	1475	69.5	2900	4833	4130X	0.272	50
2265 (232)	232	1345	49.5	2265	3775	37Mn	0.212	46.7
2400 (232)I	232	1410	57	2400	4000	4130X	0.225	48.8
2400 (232)	232	1450	60	2400		4130X	0.212	43.3
2175 (267)	267	1510	75	2175	3625	34Mn2V	0.234	68

2175 (267)	267	1510	75	2175	3625	34Mn2V	0.234	68
2400 (267)	267	1475	79	2400	4000	4130X	0.259	68
2400 (267)	267	1495	81	2400	4000	34Mn2V	0.259	68
2175 (267)	267	1550	77	2175	3625	34Mn2v	0.234	70
2300 (279)	279	1630	93.5	2300	3833	4130X	0.259	82
2400 (279)	279	1605	94.5	2400	4000	34Mn2V	0.271	80
2400 (279)I	279	1605	94.5	2400	4000	4130X	0.271	80 ***
2015(220) 229	229	1320	45.8	2015	3360	4130X	0.186	43.3
2265(25) 229	232	1250	47.5	2265	3775	4130X	0.212	43.3 ***
2400(300) 235	235	1420	59	2400	4000	4130X	0.236	48.9
2265 (232)	232	1170	43.5	2265	3775	37Mn	0.212	40
2265 (232)	232	1300	48	2265	3776	37Mn	0.212	45 ***
2265 (232)	232	1430	52.5	2265	3775	37Mn	0.212	50
2900 (232)I	232	1205	57	2900	4833	4130X	0.272	40 ***
2900 (232)I	232	1340	62.5	2900	4833	4130X	0.272	45 ***
2900 (232)I	232	1385	64.5	2900	4833	4130X	0.272	46.7 ***
2175 (267)	267	1720	85	2175	3625	37Mn	0.234	80
2175 (267)	267	1480	74	2175	3625	37Mn	0.234	68
2175 (267)	267	1520	75.5	2175	3625	37Mn	0.234	70 ***

Remark: " \*\*\* " made with steel tube

### Small Capacity DOT Standard Seamless Cylinders

Type	Diameter (in/mm)	Water capacity (in3/L)	Service pressure (psi/Mpa)	Hydraulic testing pressure (psi/Mpa)	Material
3AL2015 (4.38"-283in3)	4.38/ 111.25	283/4.64	2015/13.9	3360/23.2	6061 (AL)
3AL2015 (4.38"-172in3)	4.38/ 111.25	172/2.82	2015/13.9	3360/23.2	6061(AL)
3AL2015 (4.38"-89in3)	4.38/ 111.25	89/1.45	2015/13.9	3360/23.2	6061(AL)
3AL1800 (5.25"-205in3)	5.25/ 133.35	205/3.36	1800/12.4	3000/20.7	6061(AL)
3AA2015 (5.25"-220in3)	5.25/ 133.35	220/3.60	2015/13.9	3360/23.2	4130X ***
3AA2015 (7"-476in3)	7/178	476/7.80	2015/13.9	3360/23.2	4130X ***
3AA2015 (7"-660in3)	7/178	660/10.82	2015/13.9	3360/23.2	4130X ***
3AA2015 (7"-958in3)	7/177.8	958/16.7	2015/13.9	3360/23.2	4130X ***
3AA2015 (7"-1320in3)	7/178	1320/21.6	2015/13.9	336/23.2	4130X ***

Remark: "AL" made with aluminum, " \*\*\* " made with steel



EN Standard Seamless Cylinders

Type	Diameter (mm)	Water capacity(L)	Height (mm)	Weight (Kg)	Wallthickness(mm)	Working pressure(mpa)	Test pressure(mpa)	Material
315-2-108	108	2	330	3.7	2.7	210	315	34CrMo4
315-3-108		3	460	5.1				
315-4-108		4	590	6.4				
315-5-108		5	720	7.7				
300-5-137	137	5	470	6.7	3.14	200/216	300/310	34CrMo4
300-5.4-137		5.4	500	7.8				
300-6-137		6	545	8.4				
300-6.7-137		6.7	595	8.9				
300-7.5-137		7.5	660	9.7				
300-8-137		8	695	10.1				
300-9.1-137		9.1	780	11				
300-9.4-137		9.4	800	11.3				
300-10-137		10	845	11.8				
300-10.7-137		10.7	892	12.5				
315-4-140		140	4	390				
315-5-140	5		465	7.6				
315-6-140	6		540	8.7				
315-7-140	7		615	9.8				
315-8-140	8		690	10.9				
450-4-140	140	4	392	7	4.4	300	450	34CrMo4
450-5-140		5	467	8.3				
450-6-140		6	542	9.5				
450-7-140		7	631	11				
300-6-159	159	6	420	10.3	3.7	200	300	34CrMo4
300-7-159		7	475	11.5				
300-8-159		8	535	12.7				
300-10-159		10	650	15.1				
250-15.5-178	178	15.5	835	18.2	3.5	150	250	34CrMo4
250-16.9-178		16.9	900	19.2				
300-8-178	178	8	475	13.6	4.2	200	300	34CrMo4
300-10-178		10	567	16				
300-12-178		12	660	18.3				
300-14-178		14	752	20.7				
300-16-178		16	845	23				

300-18-178		18	937	25.4									
300-20-178		20	1029	27.7									
315-9-178	178	9	524	14.3	4.9	210	315	34CrMo4					
315-10-178		10	570	15.5									
315-12-178		12	663	17.8									
315-14-178		14	755	20.2									
315-16-178		16	848	22.5									
315-18-178		18	940	24.9									
315-20-178		20	1032	27.2									
315-22-178		22	1125	29.6									
300-13.4-204		204	13.4	570					21.1	4.7	200	300	34CrMo4
300-15-204			15	645					22.4				
300-20-204	20		815	27.4									
300-20-204I	204	20	815	28	5.2	200	300	34CrMo4					
300-23-204I		23	920	32									
300-23.6-204I		23.6	940	32.5									
300-26.6-204I		26.6	1050	36									
300-27-204I		27	1065	36.5									
300-30-204I		30	1165	40									
300-33.4-204I		33.4	1285	44									
300-37-204I		37	1415	48.4									
300-40-204I		40	1520	52									
250-40-229I		229	40	1215					48	150	250	5.2	30CrMo4
250-45-229I	45		1350	53									
250-50-229I	50		1485	58									
250-67.5267	267	67.5	1480	78	150	250	6.5	37Mn					
250-80-267		80	1750	90									





### ISO 9809 Steel Cylinders

Type	Diameter (mm)	Water Capacity (L)	Height (mm)	Weight (kg)	Working pressure(bar)	Test Pressure(bar)	Design wall Thickness (mm)	Material
ISO108 (TPED)	108	2.5	375	3.6	200	300	2.8	34CrMo4
		2.7	395	3.8				
		3	430	4.1				
ISO114	114	2.5	370	4	200	300	3	34CrMo4
		3	425	4.6				
ISO140	114	5	460	8.3	200	300	3.6	34CrMo4
ISO165		7	490	12				

(TPED)	165	8	540	13	200	300	4.3	34CrMo4		
		9	595	14						
		10	640	15						
		13.4	830	18.8						
		15	915	20.5						
ISO178	178	10	555	15	200	300	4.6	30CrMo4		
		11	600	16						
ISO203 (TPED)	203	20	810	28	200	300	5.2	34CrMo4		
		23	915	31						
ISO203 (TPED)	203	23.6	935	31.5	200	300	5.2	34CrMo4		
		26.6	1045	34.5						
		30	1160	38						
		34	1300	41						
		40	1510	47						
ISO204 I(TPED)	204	20	815	28	200	300	5.2	34CrMo4		
		23	920	32						
		23.6	940	32.5						
		26.6	1050	36						
		27	1065	36.5						
		30	1165	40						
		33.4	1285	44						
		37	1415	48.4						
		40	1520	52						
ISO219	219	35	1180	45	150	250	5.7	37Mn		
		36	1210	46						
		38	1270	48						
		40	1330	50						
		47	1540	57						
ISO229 I(TPED)	229	40	1230	55	200	300	6.2	30CrMo4		
		45	1370	60						
		46	1395	61						
		47	1420	62						
		48	1445	63						
		50	1500	65						
		47	1385	54.5						
		50	1470	56.4						
		46	1395	61.5			230	345	6	34CrMo4
		50	1500	65.5						

TC-3AAM Standard Cylinders

Type	Diameter (mm)	Water capacity(L)	Height (mm)	Weight (Kg)	WP (bar)	TP (bar)	Wall thickness (mm)	Material
TC90	90	1.78	394	2.6	138	207	2.4	30CrMo
TC108	108	1.62-1.74	263.5	3	160	240	2.6	
TC108		3	430	4.1	154	231		
TC108		4.4	595	5.4				
TC108		4.64	640	5.8				
TC133		133	3.4	355				
TC133	3.6		375	5.6	154	232	3	
TC140	140	3.5	350	7.1	166	250	3.6	
TC140		5.4	500	9.3				
TC140		6.7	575	11.3				
TC140		8.2	700	12.4				
TC140		10.2	850	15				
TC171	171	6.7	440	12	138	207	4	
TC171		10.4	620	16				
TC178		7	420	12	138	207	3.3	
TC178		10.4	570	15.5				
TC178	178	7.8	450	12	154	231	4	
TC178		10.8	590	16				
TC178		13.4	705	18.5				
TC178		15.7	815	21				
TC178		21.6	1085	27				
TC178		13.4	695	10.8	166	250	4	
TC178		16.8	845	20				
TC178		18.8	935	21				
TC178		10.8	590	16	173	260	4.2	
TC178		15.7	815	21				
TC178		21.6	1085	27				
TC178	21.65	1085	27					
TC189	189	13.4	630	14.7	138	207	3.9	
TC189		13.4	645	17.5	138	207	4	
TC189		26.6	1170	31	154	231	4.2	
TC189		27.3	1195	32				
TC197	197	13.9	600	15.6	138	207	4	
TC197		13.4	600	19				
TC197		26.6	1060	28.5				154
TC229	229	43.3	1300	50	154	231	5	

**Asia Office:**

**RmA, 7F, China Overseas Building,139 Hennessy Road,  
WanChai, Hong Kong**

**Tel/Fax: +852-3005-7867**

**E-mail: wangtrex@yahoo.com**

**info@wangtrex.com**

**Website: www.wangtrex.com**

**Shanghai Export Office:**

**Rm1201, No.519 FuShan Rd, Pudong Shanghai**

**CTC: Ms.Jenny Tel: +86-15821138577**